

**EQUISTRO®**



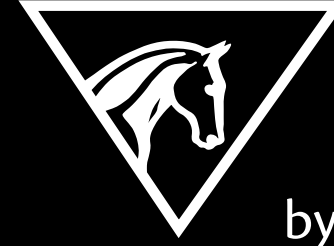
# EQUINE PERFORMANCE CATALOG



**JOHN SWALES**  
2017 NRCHA WORLD'S  
GREATEST HORSEMAN

**THE SCIENCE BEHIND PERFORMANCE**

EQUISTRO®



by



THE EQUISTRO LINE IS SPECIFICALLY DESIGNED TO **SERVE THE NEEDS OF THE EQUINE ATHLETE.**

Our primary goal is to help you and your horse deal with the challenges of heavy training, frequent travelling and staying on top of the game every time you compete. We have prepared products that can bring long-term benefits to you and your equine partner:

- Reduce veterinary bills;
- Improve performance;
- Keep your horse sound;
- Keep your horse focused.

Thus making the experience of riding and showing more enjoyable.

**Equistro products** have been formulated by equine veterinarians, nutritionists and pharmacists.

**Equistro** is provided to you by Vetoquinol, a leading international animal health company with high quality manufacturing standards.

EQUISTRO IS A PRODUCT LINE  
THAT WILL TAKE YOU  
**FROM GOOD TO  
THE BEST!**



# PRODUCTS

<b>DEALING WITH STRESS</b> .....	P.05
Zylkene® Equine	
<b>JOINT HEALTH</b> .....	P.08
Bio-Iso-G® and Bio-Iso-G® Plus	
Flexadin® UCII®	
Cartiflex	
<b>HEALTHY STRONG HOOVES</b> .....	P.10
Kerabol Biotin	
<b>DIGESTIVE SUPPORT</b> .....	P.12
U-Gard®	
Legaphyton	
<b>ELECTROLYTES TO REPLENISH LOSSES</b> .....	P.14
Electrolyt 7	
<b>OPTIMAL DAILY NUTRITION FOR PERFORMANCE HORSE</b> .....	P.16
Nutrequin Elite	
Equine Super Diet	
<b>MUSCLE SUPPORT, ENDURANCE AND RECOVERY</b> .....	P.20
Myopower	
Excell E	
BC2A™	
<b>IRON AND VITAMIN B<sub>12</sub> FORMULATIONS</b> .....	P.22
Mega-Blud®	
Multi-Glo	

# ZYLKENE® EQUINE

KEEP CALM, YOU'VE GOT ZYLKENE®



Do you know that feeling when your horse's focus is everywhere else but in the show ring?

Do you want your horse to perform in the show pen like you are riding at home?

Does your veterinarian or farrier struggle with your needle shy, terrified four-legged friend?

**How can you help your horse deal with stress?**  
 The solution is to identify the problem, and desensitize your horse through proper training, positive reinforcement and with the help of products that can decrease stress response without affecting the ability to learn. Vetoquinol is proud to present you with a unique solution.

**FOR LIFE'S UPS AND DOWNS,  
 ZYLKENE® EQUINE HELPS KEEP  
 YOUR HORSE IN STRIDE!**

### WHAT IS ZYLKENE® EQUINE?

- Fully natural calming nutraceutical:
- With potential for long-term behaviour improvement.
- Formulated as highly palatable, apple flavoured powder.



## ZYLKENE® EQUINE



### IS IT EFFECTIVE? YES!

- Zylkene® Equine has been extensively used in Europe and North America over several years with excellent feedback from veterinarians and horse owners.
- Studies on the Zylkene® molecule have been performed on rats, dogs, cats, horses and people.
- In two published clinical studies Zylkene® Equine was proven to ease a horse's transition to a new environment and decrease stress during multiple procedures such as training, veterinary and farrier care.

### IS ZYLKENE® EQUINE SAFE? YES!

- No known side effects.
- No disinhibition (loss of inhibition).
- No reduction of efficacy over time.
- No development of dependency over time.

STOP YOUR HORSE FROM RUNNING A RACE,  
BEFORE THE RACE!



#### Dosage and administration:

Give orally once daily.

Horses <500 kg = 1-2 pouches

Horses >500 kg = 2-4 pouches

SHORT TERM USE: Start 3 days before the anticipated stressful event.

LONG TERM USE: Give for 10-14 days, extend duration as necessary.

#### DID YOU KNOW THAT...

- Studies have shown that horses' heart rate and stress hormone levels rise every time they travel, which can lead to early "burnout" and poor performance.
- Stall pacers are at high risk of re-injury while confined for orthopedic rehabilitation.

**STRESS IN PERFORMANCE HORSES CAN LEAD TO GASTRIC ULCERATION.**

Zylkene®



CLAY WEBSTER

Professional reining and working cow horse trainer

# NO JOINTS NO HORSE!



Horse athletes experience strenuous daily training. The intensity and specificity of certain movements such as fence jumping or sliding stops puts extensive strain on joint structures. Over time this can trigger inflammation, called synovitis. A destructive cascade begins, and if left untreated will progress to irreversible osteoarthritis.

Using supplements that support joint health are vital to keep your horse performing to its highest ability.



Healthy Joint



Joint with Synovitis

WHEN IT COMES TO JOINT SUPPLEMENTS, EQUISTRO OFFERS THREE UNIQUE AND MODERN SOLUTIONS:

## BIO-ISO-G®

Bio-Iso-G® is a joint supplement with cutting edge technology.



For increased bioavailability Bio-Iso-G® contains active components of:

- Glucosamine (glutamine)
- Chondroitin (proline, glutamate, glycine and glucuronate)
- MSM (sulfur)

Bio-Iso-G® can help combat early joint disease by:

- Providing building blocks for joint cartilage.
- Providing lubricating ingredients for joint fluid.
- Providing anti-inflammatory and antioxidant properties.

Bio-Iso-G Plus®: All the benefits of Bio-Iso-G® plus Devil's Claw and Yucca, known for their anti-inflammatory and free radical scavenging properties.

### DID YOU KNOW THAT...

Bioavailability of glucosamine in the horse is only 2%. Active isolate technology bypasses this issue.

## FLEXADIN® UCII®

Flexadin® UCII® is a novel product with a unique ingredient, **undenatured type II collagen**, with the capability to protect the joint cartilage from damage by modulating immune system response to inflammation. Flexadin® UCII® has added **MSM (anti-inflammatory)** and **chelated Manganese**, which is necessary for proper formation and turnover of joint cartilage.



- Type II collagen is major structural molecule responsible for elastic properties of joint cartilage.
- Only the undenatured form of collagen has shown a unique immune modulating effect in multiple human and animal studies.
- In a study on horses with osteoarthritis, UCII has decreased lameness scores and pain upon flexion test, within 150 days of supplementation.
- Equistro Flexadin® UCII® is the only product on the market registered for horses containing undenatured type II collagen.

Due to its specific mechanism of action, Flexadin® UCII® can be used in combination with other products such as Bio-Iso-G® or Cartiflex. Each of them provide different building blocks for joint cartilage and joint fluid, as well as target different pathways of inflammation. Together, they offer a multilevel approach to joint health and disease prevention.

## HELP YOUR HORSES' JOINTS DEAL WITH INCREASED IMPACT!

## CARTIFLEX

Cartiflex is a synergistic combination of **green lipped mussels**, **brown seaweed extract**, **omega-3 fatty acids**, and **antioxidants Vitamin E and Selenium**.



- Green lipped mussels (*Perna canaliculus*) were consumed by Maori, the indigenous people of New Zealand, to help keep them healthy and pain-free.
- Studies in humans with mild to moderate osteoarthritis showed improvement in their pain and mobility scores as soon as two months into therapy with *Perna canaliculus* extract.
- Brown seaweed extract (marine algae) is loaded with macro- and micronutrients, but its main benefit in osteoarthritis is due to two powerful antioxidants: fucoidans and algal polyphenols.
- Vitamin E and Selenium act in symphony to combat constant formation of free radicals, which is increased in times of strenuous exercise.

# NO FEET NO HORSE!



## THE HORSE'S HOOF IS AN INCREDIBLE WORK OF ART AND EVOLUTION.

The hoof is the end of the modified third digit, and developed into today's form in order to protect the leg and enclosed structures and cushion the impact of contact with the ground at different speeds.

Hoof capsule continues to grow throughout a horse's lifetime at a pace of 1.5 cm (foals) to 1 cm per month (older horses). It takes about a year to grow out a full hoof capsule from the coronary band to the ground. Studies have shown faster growth of hoof capsule in horses supplemented with over 15 mg of biotin per day.

The major structural material in hoof capsule is keratin. It contains up to 25% of the amino acid cysteine, which is produced in the horse's body from conversion of dietary methionine. Zinc deficiency has been implicated to disturb keratin formation. Zinc is important for keratin and collagen formation in hooves, as well as in coat and mane.

When dealing with a fragile hoof wall that cracks or is deformed due to coronary band injury or laminitis (founder), it's important to provide all the necessary ingredients for the hoof wall to rebuild itself.

A complete hoof supplement contains not only biotin, but also methionine and zinc.

## KERABOL BIOTIN PROVIDES ALL THAT AND MORE!

### KERABOL BIOTIN



### MUCH MORE THAN JUST A BIOTIN SUPPLEMENT!

Kerabol Biotin is a state-of-the-art combination of three gold standard hoof health ingredients: biotin, zinc and the amino acid methionine. It provides approximately 20 mg of Biotin per dose. It also contains a very high dose of methionine to provide the growing hoof with building blocks for keratin production.

Added organic Selenium (yeast bound) and Manganese

- Selenium is a cofactor for many enzymes, and an important free radical scavenger. Selenium deficiency may lead to cracking of the hooves around the coronary band.
- Manganese is important for joint cartilage formation and elastic connective tissue within the hoof capsule.

# STRESSED ATHLETE?

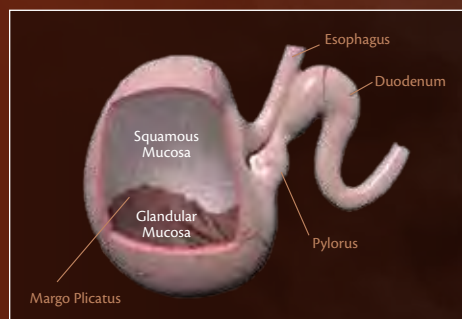
## LET'S GET TO THE STOMACH OF THE PROBLEM!



THE PHYSIOLOGY OF THE HORSE'S STOMACH HAS EVOLVED TO BE ATTUNED WITH A NATURAL LIFE-STYLE; GRAZING UP TO **17 HOURS A DAY** RESULTS IN CONSTANT GASTRIC ACID PRODUCTION.

A fine balance in the horse's stomach pH is achieved by the production of alkaline saliva while chewing to counter the acid produced by the stomach.

Our horses are under stress from strenuous exercise, stall confinement, reduced grazing time, and increased concentrated feed intake, with a subsequent decrease in hay intake. All of these factors contribute to a more acidic stomach pH, leading to gastric ulceration.



### EQUINE GASTRIC ACID SYNDROME (EGUS)

is highly prevalent among performing horses and is found in:

- 94% of stabled race horses.
- 93% of endurance horses during competing season, dropping to 48% when not in competition.
- 69% of polo horses.
- 40-88% of western performance horses undergoing frequent travel and training.
- 63% of hunter/jumper and dressage horses.

### U-GARD®

**U-GARD® IS A DIETARY SUPPLEMENT THAT CONTAINS:**

- Calcium carbonate, which is an antacid shown to decrease stomach acidity in horses.
- Coating agents such as aluminum calcium silicate and aloe vera.



## LET'S TALK LIVER!

THE LIVER IS A MULTIFUNCTIONAL ORGAN, IMPORTANT IN DIGESTION, DETOXIFYING, BLOOD, AND PROTEIN BUILDING.

Multiple factors can negatively affect the liver's health, such as small intestinal disease, toxins, blood borne products, viruses and bacteria. Common symptoms of liver disease are **jaundice** (yellow coloured membranes) and **neurological abnormalities**.

#### DID YOU KNOW THAT...

- Most clotting factors are produced in the liver? When this organ fails, prolong **bleeding** can pose a risk to your horses' health.
- Certain **plants**, like ragwort, produce liver toxins called pyrrolizidine alkaloids. Usually horses avoid them, but if the pasture is sparse, horses may eat significant amounts. Ingestion of these plants will result in **photosensitivity**, and may lead to liver failure.

### LEGAPHYTON

#### YOUR HORSES' LIVER BEST FRIEND!

Legaphyton contains silybin, the biologically active substance extracted from milk thistle. Silybin is a potent antioxidant that has been used in human and dogs with liver disease.

#### Silybin: hope for the hooves?

A recent German study has shown that silymarin (of which silybin is a major active component) extract was able to reduce laminitic changes (founder) in hoof explants immersed in harmful endotoxin.



#### DID YOU KNOW THAT...

common signs of gastric ulceration in horses are:

- Poor performance
- Decreased appetite
- Sensitivity when tightening the girth, looking at the flanks and grinding teeth
- Recurrent colic
- Change in behaviour, often becoming irritable

# DON'T SWEAT THE SMALL STUFF!



Sweating is a major route to dissipate heat during heavy exercise or high ambient temperature.

**HORSES CAN LOSE UP TO 10% OF THEIR BODY WEIGHT THROUGH INTENSIVE SWEATING!**

Sweat contains many important electrolytes such as sodium, chloride and potassium. In performance horses, zinc can be lost in significant amounts in sweat as well. All of these minerals have to be replenished, as their deficits can lead to disturbance in skeletal muscle ion content causing muscular dysfunction. Always provide electrolytes and water at the same time. Replacing electrolytes without rehydrating the horse can lead to severe complications such as sodium toxicity.

## ELECTROLYT 7

### WE'VE GOT YOU COVERED!

Electrolyt 7 is a complete electrolyte replacement to match the specific needs of performance horses. It contains major macrominerals lost in sweat: sodium, chloride, potassium, phosphorus and zinc, with added:

- Magnesium and Calcium to support proper muscle function
- Vitamin C to boost the immune system under stress of heavy exercise or high ambient temperatures
- Vitamin E for its antioxidant function



**GEOFF HOAR**  
Canada's ultimate cow horse champion



# VITAMINS AND MINERALS

## DAILY NUTRITION PROGRAM



**BASIC DIET** CONSISTING OF HAY, GRAIN AND PELLETED FEEDS IS OFTEN LACKING VARIOUS NUTRIENTS SUCH AS VITAMINS AND TRACE MINERALS.

During storage, vitamins in hay are undergoing oxidizing processes and degradation. Vitamin and trace mineral deficiencies show up in a horse after a chronic lack of supply, and may present as:

- Increased susceptibility to infections.
- Poor performance and lack of energy.
- Muscular and neurological problems.
- Poor hair coat and hoof condition.

### DID YOU KNOW THAT...

- Performance horse requirement for vitamins and trace minerals may be up to 2.5 times higher than for pleasure horses.
- Levels of fat soluble vitamins and minerals have to be balanced to prevent toxicity.
- You can't fix long standing deficiencies with a one-time vitamin booster before the show.

## EQUISTRO

### BRINGS YOU THE SOLUTION:

Nutrequin Elite is a premium show season supplement, complete with vitamins and minerals, and added methionine, formulated to specifically meet the needs of your equine athlete. It is provided as a wheat germ meal mixed with dried alfalfa for high palatability and digestibility.

## NUTREQUIN ELITE



### NUTREQUIN ELITE IS LOADED WITH:

- Premium organic and inorganic sources of vitamins and trace minerals at high levels.
- Chelated minerals for increased bioavailability.
- Yeast bound Selenium - the most biologically active form of Selenium.
- Natural source of vitamin E - up to 3 times more potent than synthetic source.
- Biotin to help improve hoof health.
- Coated vitamins to increase stability and decrease degradation over time.

GIVE YOUR HORSE  
**A JUMPSTART EVERY MORNING!**

## EQUINE SUPER DIET



### NOURISH YOUR HORSE WITH TASTY ALFALFA PELLETS!

Equine Super Diet is an all-around off-season comprehensive daily vitamin and mineral supplement with unique features:

It is the most concentrated formula of comprehensive daily supplements;

- Only 30 g/day keeps your horse covered for all basic nutrient requirements.

Highly palatable dust-free alfalfa pellets with apple flavour;

- Your horse will eat it from your hand!

Excellent source of **Biotin**;

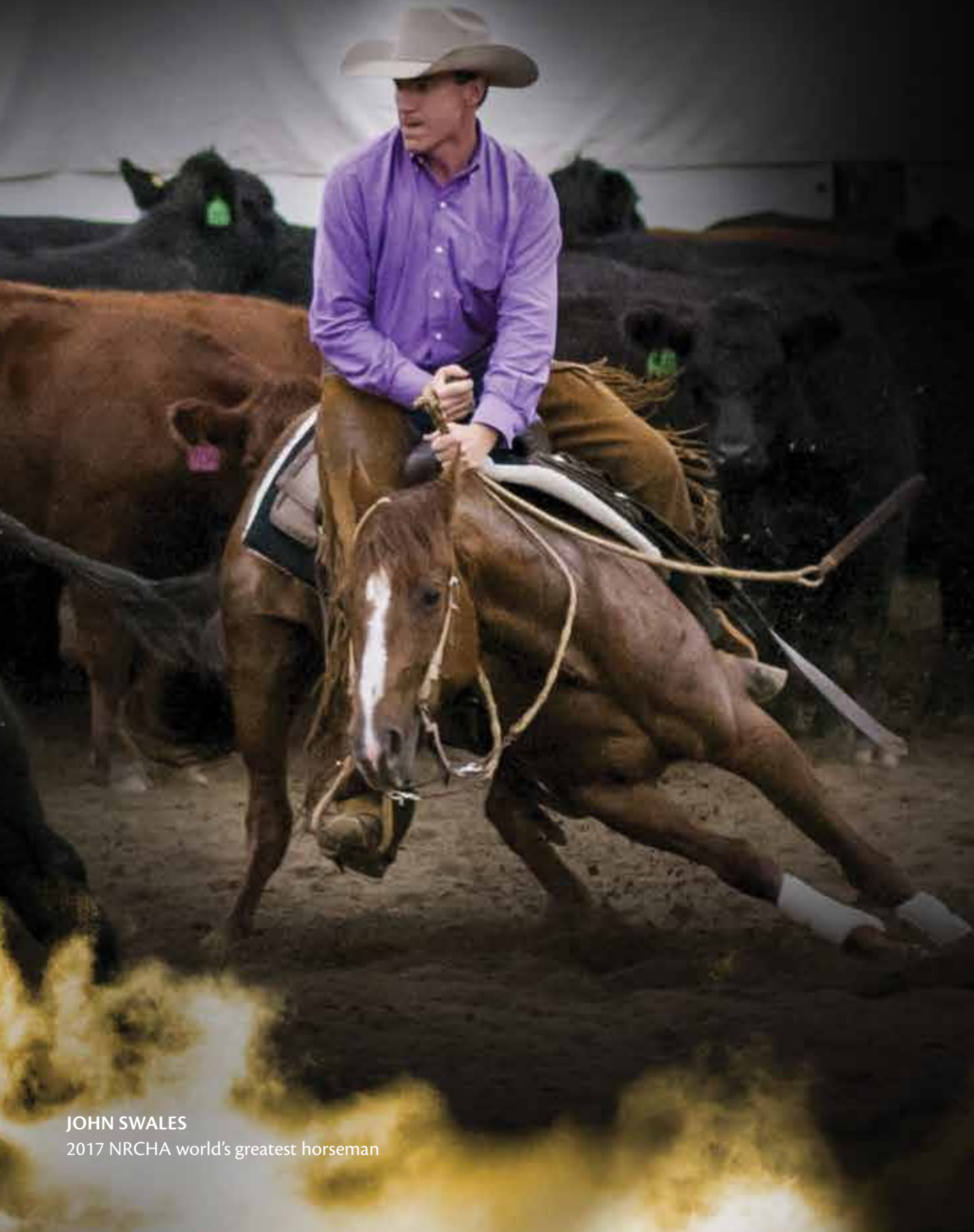
- Equine Super Diet is recommended by farriers.

High dose of **antioxidants**: Selenium, Vitamin E and Vitamin C - help to combat increased free radical turnover for the equine athlete;

- Booster dose of Vitamin A—for the repair and maintenance of skin, mucous membranes and gut lining.

WELL-ROUNDED NUTRITION ALLOWS YOUR HORSE  
**TO GIVE ITS BEST EVERY DAY!**

# POWER THE MUSCLES, COMBAT DAMAGE AND EASE THE RECOVERY!



JOHN SWALES  
2017 NRCHA world's greatest horseman

## A HORSE'S DIET IS OFTEN ADEQUATE IN PROTEIN LEVELS, YET MAY BE DEFICIENT IN ESSENTIAL AMINO ACIDS.

This lack, in particular of step-limiting amino acids **lysine, methionine and threonine**, may altogether prevent proper muscle tissue formation and repair, as well as lead to muscle mass degradation in order for the body to recover the needed amino acids for other functions.



## YOUR HORSE MAY BE **OVERFED PROTEIN** AND SAME TIME "STARVING" FOR PROPER QUALITY PROTEIN.

An increased requirement for lysine exists in particular for growing and performance horses.

Branched-chain amino acids such as leucine, isoleucine and valine, have been shown to increase endurance and are the first choice post-workout booster for muscular tissue both in humans and horses.

### Consider amino acid supplementation:

- When diet is not balanced for lysine, and other essential amino acids.
- In horses with increased muscle tissue turn-over i.e. in tying-up syndromes (PSSM, HYPP).
- In times of increased demand like strenuous training, growing or heavily muscled horses.





## EQUISTRO OFFERS **THREE** TARGETED SOLUTIONS TO KEEP YOUR HORSE'S MAIN POWER SOURCE ALWAYS CHARGED.

### 1. MYOPOWER

for proper nutrition of muscular tissue, especially when growing muscle tissue by athletic exercise, or in young horses.

### 2. EXCELL E

in times of increased turnover i.e. in tying-up syndromes.

### 3. BC2A™

to decrease muscle tissue decline post exercise or as result of tying-up.



## EXCELL E

### A COMPLETE SOLUTION WHEN NEEDS ARE GREATEST!

Excell E contains a high dose of Lysine, organic Selenium and Vitamin E, and Magnesium. This combination can aid in horses that suffer from tying up syndromes such as RER, PSSM and HYPP, where frequent damage occurs to muscle tissue warranting increased demand for: free-radical scavengers (Vitamin E and Selenium) and building blocks (Lysine and Magnesium).

#### DID YOU KNOW THAT...

- It's not only the muscular system that requires a high concentration of free radicals scavengers. Certain neurological diseases in horses have been associated with Vitamin E and Selenium deficiency.
- Selenium deficiency can cause white muscle disease, weakness and muscle atrophy. Many areas in Canada are deficient in this mineral.
- Magnesium is involved in the function of over 300 enzymes in the body! Apart from its role in muscle contraction, it helps protect against free radical damage to cells.

## DELAY MUSCLE FATIGUE FOR FASTER, SMOOTHER RECOVERY!

## MYO POWER



### FUEL FOR MUSCLES!

Myopower contains a high quality protein with increased selected amino acid concentration. It provides your horse with many essential amino acids, such as lysine, methionine and threonine, as well as branched chain amino acid L-leucine in its biologically active form.

**Leucine** has been shown in studies on humans and horses to increase post-exercise utilization of glucose, in particular to replenish energy storage in muscle cells. **Myopower has added glucose, to potentiate energy-producing effect of leucine.**

#### DID YOU KNOW THAT...

- Methionine is crucial for keratin formation in the **hoof wall**, and its supplementation is recommended in horses with founder, or weak, cracking hooves.
- Daily supplementation of as little as 50g of Myopower provides your horse with building blocks and energy for muscle tissue, and accelerates recovery.

## BC2A™

### ENGINEERED TO HELP YOUR HORSE TRAIN AT MAXIMUM CAPACITY.

#### BC2A's unique formulation

BC2A™ is a patented branched chain amino acid formula in a pre-dosed oral paste form. BC2A's L-crystalline, "pre-digested" form ensures rapid absorption, and a circulating reservoir of branched chain amino acids in the bloodstream within 30 to 60 minutes after administration.

#### BC2A's clinical studies

In studies on horses, BC2A™ was proven to:

- Decrease heart rate of exercising horses by 15%.
- Decrease lactic acid build up by 50%.
- Decrease break-down of muscle tissue in race horses prone to tying-up.

Racetrack horses that trained on BC2A™ had significantly lower leakage of muscle enzymes after the race. This indicates a lower degree of exercise-induced muscle damage.

#### Administration Timing - the key to effective results!

- Administer BC2A™ 30 to 60 minutes prior to strenuous exercise.
- Administer BC2A™ within 30 minutes after strenuous exercise.



# BOOST YOUR HORSE'S VITALITY IN SHOW SEASON!



**GOEFF HOAR**  
Canada's ultimate cow horse champion

## MEGA-BLUD AND MULTI-GLO ARE SUPPLEMENTS RICH IN:

- Iron and Vitamin B<sub>12</sub> to provide building blocks for red blood cell production.
- Vitamin A and D for shiny coats and support of immune and skeletal systems.
- Trace minerals, fat soluble and water soluble vitamins to prevent deficiency



### MEGA BLUD®



#### FLAVOURED POWDER IN A PRE-DOSED POUCH, WITH ADDITION OF:

- Vitamin E for support of the musculoskeletal system.
- Iodine to support pregnant mares and prevent developmental abnormalities associated with hypothyroidism in foals.







**Feeding directions:** one pouch, when needed in times of increased training and competition. Convenient box with 30 pre-packed doses. Pouches are stable in storage and resistant to humidity.

### MULTI-GLO



#### EXCELLENT SOURCE OF IRON AND VITAMINS!

**Feeding directions:** 30 mL administered daily on feed in times of increased training and competition.

PRODUCTS	ACTIVE INGREDIENTS	DOSAGE AND ADMINISTRATION For a 500 kg (1100 lb) horse	
		Show season	Off season
<b>BEHAVIOUR</b>			
 <b>ZYLKENE® EQUINE</b> Apple flavoured powder 4 g pouch	Alpha-casozepine	2 pouches once daily starting 3 days prior to a stressful event	2 pouches once daily starting 3 days prior to a stressful event; or daily for 10-14 consecutive days for training purposes
<b>VITAMINS AND MINERALS</b>			
 <b>NUTREQUIN ELITE</b> Wheat germ meal 3 kg and 10 kg pail	Vitamins Chelated minerals Natural vitamin E Yeast bound (organic) selenium Amino acids	100 g/day (2 level scoops)	75 g/day (1.5 level scoops)
 <b>EQUINE SUPER DIET</b> Alfalfa pellet 3 kg and 10 kg pail	Vitamins Minerals	60 g/day (2 scoops)	30 g/day (1 scoop)
<b>JOINTS</b>			
 <b>BIO-ISO-G® AND BIO-ISO-G® PLUS</b> Flavoured liquid 946 mL and 3.8 L jug	Active isolates of glucosamine, chondroitin, and MSM. Plus formula: added Devil's Claw and Yucca extracts	Loading dose: 30 mL once daily for 5 days Followed by: 15 mL/day	Loading dose: 30 mL once daily for 5 days Followed by: 15 mL/day
 <b>CARTIFLEX</b> Powder 1 kg jar	New Zealand green lipped mussels (Perna Canalicula) extract Sea algae (Ascophyllum nodosum) extract Omega-3 fatty acids Methionine Vitamin E Yeast bound (organic) Selenium	30 g/day	30 g/day
 <b>FLEXADIN® UCII®</b> Powder 1 kg jar	Undenatured collagen type II MSM Chelated Manganese	Loading dose 12 weeks: 15 g/day Maintenance: 10 g/day	Loading dose 12 weeks: 15 g/day Maintenance: 10 g/day

PRODUCTS	ACTIVE INGREDIENTS	DOSAGE AND ADMINISTRATION For a 500 kg (1100 lb) horse	
		Show season	Off season
<b>MUSCULAR</b>			
 <b>MYOPOWER</b> Pellet 1.2 kg jar and 2.3 kg pail	18 amino-acids Added L-lysine	50 g/day For minimum of 5 weeks	
 <b>EXCELL E</b> Liquid 250 mL and 1 L bottle	Yeast bound organic Selenium Vitamin E Magnesium L-lysine	20 mL once daily	10 mL once daily
 <b>BC2A™</b> Paste in pre-dosed syringe, 88 g	L-Leucine L-Isoleucine L-Valine L-Glutamine L-Carnitine	One tube 30-60 min before the show; one tube 30 min after the show	In the case of heavy training; administer the same as for a show
<b>DIGESTIVE</b>			
 <b>U-GARD®</b> Powder 1.8 kg pail	Calcium carbonate Magnesium oxide Dried Apple Pectin Pulp Aloe Vera gel	28 g (one scoop) twice daily	
 <b>LEGAPHYTON</b> Pellets 900 g jar	Silybin Phosphatidylcholine	30 g once daily	
<b>CIRCULATORY</b>			
 <b>MEGA-BLUD</b> Flavoured powder 28 g pouch	Vitamin B <sub>12</sub> Iron Additional vitamins and minerals	1 pouch as needed	N/A
 <b>MULTI-GLO</b> Liquid 4 L jug	Vitamin B <sub>12</sub> Iron Additional vitamins and minerals	30 mL daily	N/A
<b>HOOF AND COAT</b>			
 <b>KERABOL BIOTIN</b> Powder, 1 kg jar	High dose Biotin (19.5 mg/day) Methionine Chelated Manganese Chelated Zinc Yeast bound (organic) Selenium	15 g/day Suggested feeding time: 3 months to one year for full regrowth of a hoof capsule	
<b>ELECTROLYTES</b>			
 <b>ELECTROLYT 7</b> Powder, 1,2 kg jar and 3 kg pail	Sodium diacetate (alkalinizing agent) Sodium chloride Calcium, Magnesium, Phosphorus, Potassium Zinc Vitamin C Vitamin E	40-120 g as required	Use on occasions of heavy sweating (training, transport, heat)

# VETOQUINOL EQUINE PERFORMANCE



# PHOTO CREDITS



**JOHN SWALES** ..... **COVER**  
© Primo Morales



**CLAY WEBSTER** ..... **P.07**  
© Natalie Jackman



**KAMRYN GERVAIS** ..... **P.10**  
© Dreams Alive Imagery



**GEOFF HOAR** ..... **P.15**  
© Tara Mckenzie

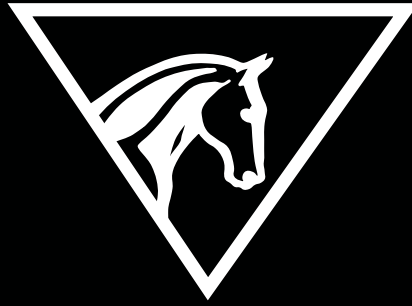


**JOHN SWALES** ..... **P.18**  
© Natalie Jackman



**GEOFF HOAR** ..... **P.22**  
© Natalie Jackman

# EQUISTRO®



## THE SCIENCE BEHIND PERFORMANCE



PROUD PARTNER OF



APPALOOSA HORSE CLUB

Kawartha Regional Appaloosa  
Horse Club's



ashaontario.com

American Saddlehorse  
Association of Ontario



Reining Alberta



Alberta Reined Cow  
horse association



Sask Reined Cow Horse  
Association



Canadian Coast Reined Cow  
Horse Association



Canadian Supreme



Ontario Equestrian Federation

